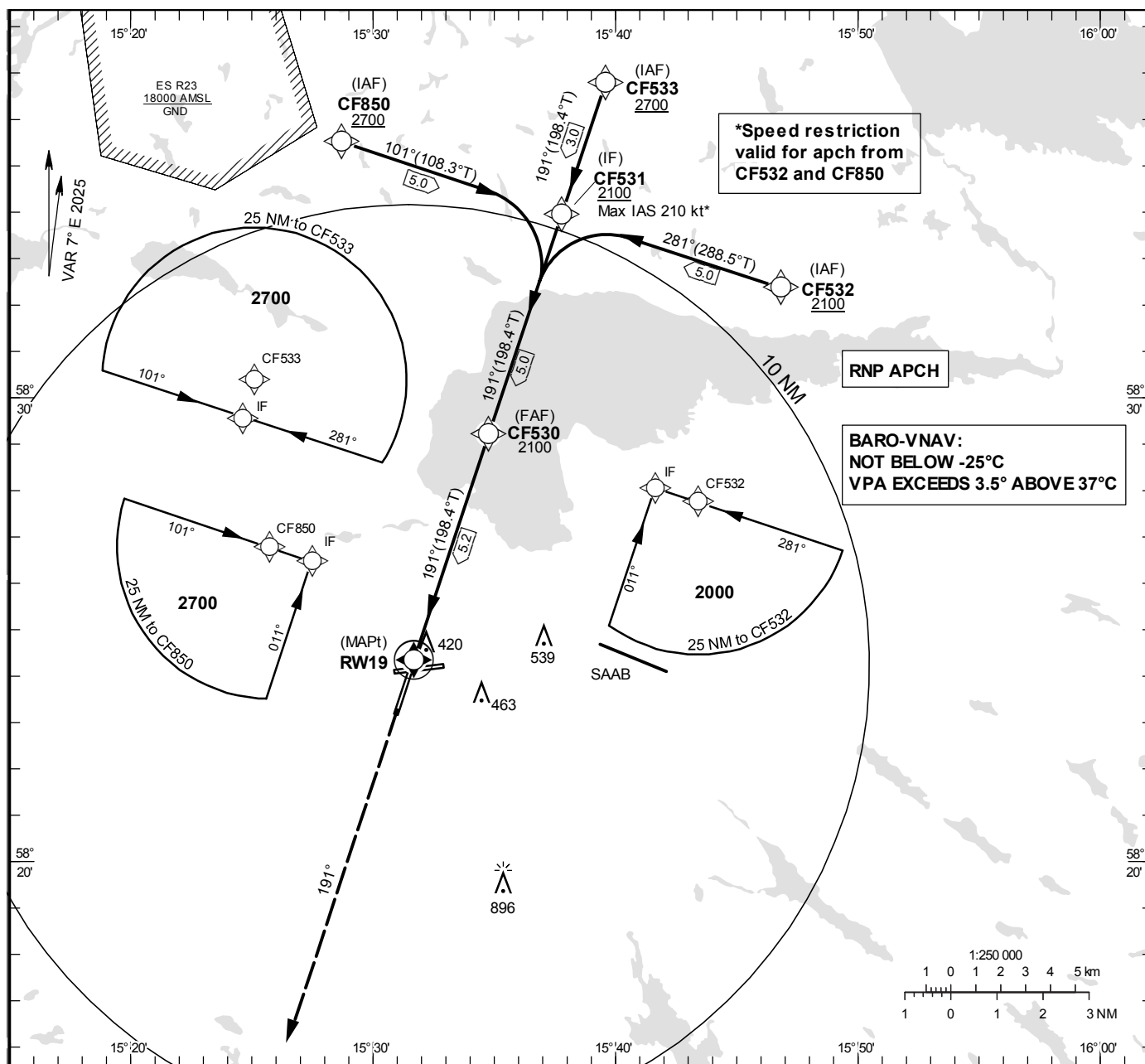
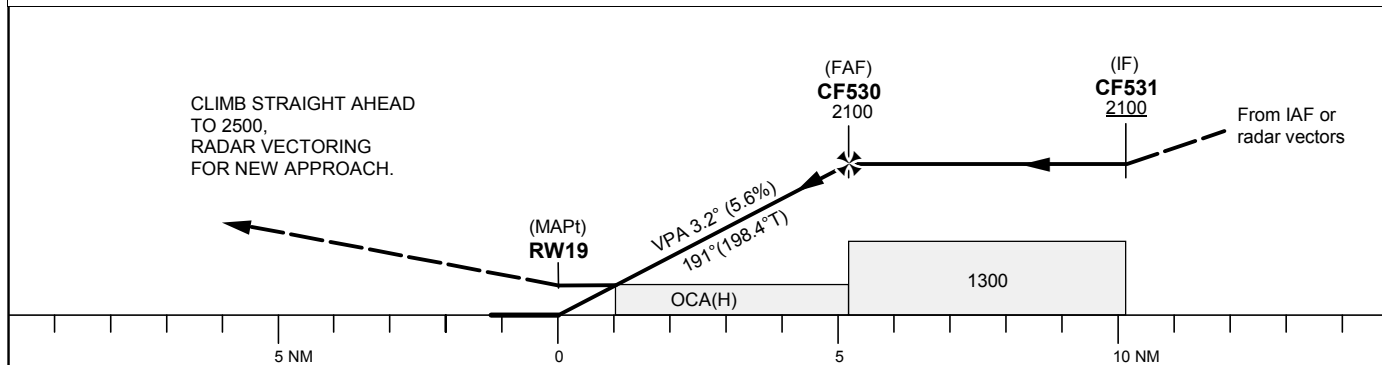


**THR ELEV 295.4 ft, AD ELEV 309 ft**  
OCH are related to THR.  
BRG are MAG (True).  
ALT, HGT and ELEV in ft.

MALMEN TOWER	129.800
ÖSTGÖTA APPROACH	132.955
	135.850



TA 5000 ft AMSL RDH 55.8 ft



OCA (H)					Final approach	Distance FAF-MAPt 5.2 NM									
Cat of ACFT	A	B	C	D	Dist to RW19	1		2		3		4		5	
LNAV/VNAV	550 (255)	562 (267)	570 (275)	580 (285)	ALT	690		1030		1370		1710		2050	
LNAV	670 (380)				GS	kt	80	100	120	140	160	180			
Circling	760 (460)	840 (540)	940 (640)	1290 (990)	Rate of descent	ft/min	455	565	680	795	905	1020			

AIRAC AIP AMDT 3/2025

**LINKÖPING/Malmen****RNP RWY 19 via CF850**

Path Desc	Waypoint Identifier	Fly-over	Course °M(°T)	Dist (NM)	Turn Dir	Altitude	Speed	VPA/RDH	Rec Navaid	Navigation Specification
IF	CF850	-	-	-	-	+2700	-	-	-	RNP APCH
TF	CF531	-	101°(108.3°)	5.0	-	-	-210	-	-	RNP APCH

**RNP RWY 19 via CF533**

Path Desc	Waypoint Identifier	Fly-over	Course °M(°T)	Dist (NM)	Turn Dir	Altitude	Speed	VPA/RDH	Rec Navaid	Navigation Specification
IF	CF533	-	-	-	-	+2700	-	-	-	RNP APCH
TF	CF531	-	191°(198.4°)	3.0	-	-	-	-	-	RNP APCH

**RNP RWY 19 via CF532**

Path Desc	Waypoint Identifier	Fly-over	Course °M(°T)	Dist (NM)	Turn Dir	Altitude	Speed	VPA/RDH	Rec Navaid	Navigation Specification
IF	CF532	-	-	-	-	+2100	-	-	-	RNP APCH
TF	CF531	-	281°(288.5°)	5.0	-	-	-210	-	-	RNP APCH

Path Desc	Waypoint Identifier	Fly-over	Course °M(°T)	Dist (NM)	Turn Dir	Altitude	Speed	VPA/RDH	Rec Navaid	Navigation Specification
IF	CF531	-	-	-	-	+2100	-	-	-	RNP APCH
TF	CF530	-	191°(198.4°)	5.0	-	+2100	-	-	-	RNP APCH
TF	RW19	Y	191°(198.4°)	5.2	-	@351	-	-3.2/56	-	RNP APCH
CA	-	-	191°(198.3°)	-	-	@2500	-	-	-	RNP APCH
VM	-	-	191°	-	-	-	-	-	-	RNP APCH